

Procedure 3.110A

FUEL CAP INSTALLATION

In this procedure...

You will locate and install the fuel filler cap in each wing.

For this procedure, the following parts will be required:

<u>Part Number</u>	<u>Description</u>	<u>Quantity</u>
111-33-052	Fuel Filler Cap	2

Step 1. LOCATE THE FUEL CAP.

The fuel cap joggle is installed in the wing at the factory.

Step 2. CUT HOLE IN WING SKIN.

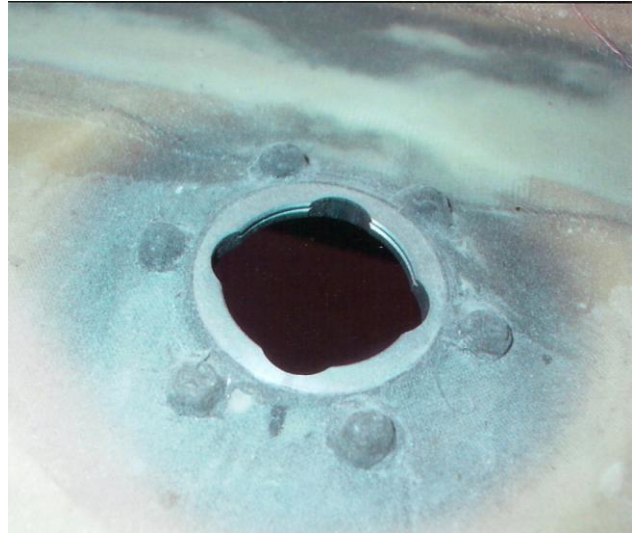
Cut away the center of the recessed hole in the wing. Remove sufficient material to allow the fuel cap to sit down into the joggle. (Fig. 110.1)



Fig. 110.1

Step 3. REMOVE FLANGE AND PREP FOR FINAL ASSEMBLY.

Carefully trim the fiberglass for a good fit. Install the filler cap into the flange. Make sure the opening tab is facing to the rear of the wing. Check to see if the flange is fitting flush with the wing skin. If any areas fit below the skin use a shim to raise the cap flange. Sand areas where the flange is too high. (Note the wing skin is curved and fuel cap is flat so there will be a little mismatch in some areas.) With the cap oriented in the correct direction, drill the holes for the attaching screws. Mix up and place the Pro Seal sealant in the flanged area. Install the cap and secure it in place with the screws. Clean the excess sealant from around the flange before it cures. Use Pro-seal to “Beehive” (build up encapsulating dome over) cover nuts on interior side. (Fig. 110.2 through 110.4)

**Fig. 110.2****Fig. 110.3**

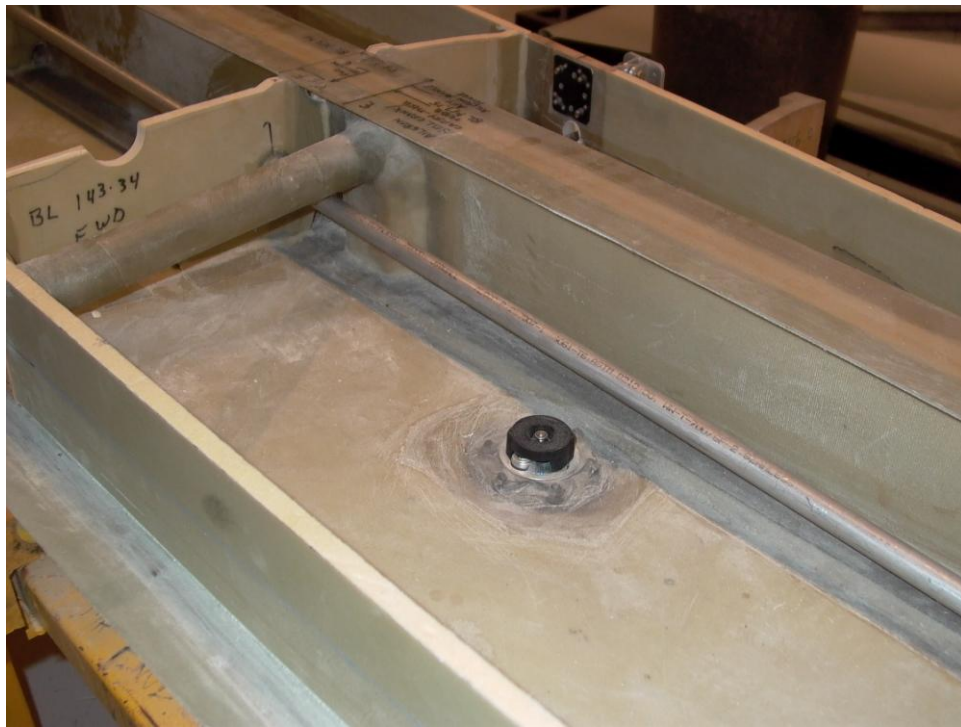


Fig. 110.4