

Procedure 3.151A

INSTALLATION OF BRAKE LINE CONDUIT

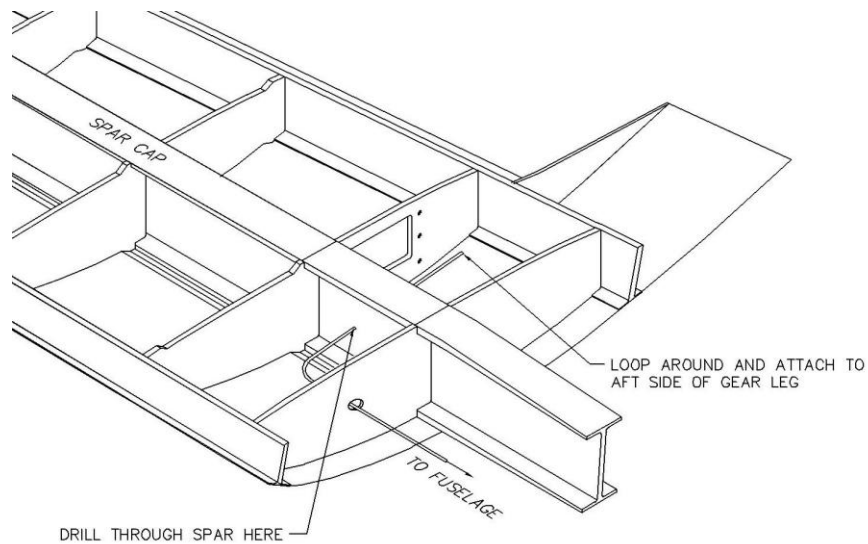
In this procedure...

You will install the conduit for routing the brake line through the wing ribs.

<u>Part Numbers</u>	<u>Description</u>	<u>Qty</u>
111-12-XXX	Conduit, Brake Line	2

Step 1. Install Brake Line Conduit.

The main landing gear brake line has already been incorporated into the main landing gear leg upon fabrication. The upper connection point is on the aft side, in the wing area. The lower connection point is at the bottom of the axle. Run brake line through rib J (BL 23.50) to fuselage. (Fig. 151.1)

**Fig. 151.1**